



THE SOCIETY HOTEL

BINGEN

YOUR COLUMBIA GORGE GETAWAY

CELEBRATION · COLLABORATION · REJUVENATION

Tour:

- 2| WELCOME
- 3| CELEBRATIONS
- 4| COLLABORATIONS
- 5| REJUVENATIONS
- 7| LODGING
- 12| SPA & BATHHOUSE
- 14| CELEBRATIONS & GATHERINGS
- 17| OUTDOOR GATHERINGS
- 19| FOOD & BEVERAGE
- 20| DRINK PACKAGES
- 23| WEDDING PARTNERS



Jessie Burke &
Jonathan Cohen
The Society Hotel Founders

A Message to our Guests,

As lifelong travelers and lovers of old buildings, we wanted to create something special at each of our properties. We wanted to create places that allow for authentic connection, because we firmly believe that all people are seeking community, whether they realize it or not. The Society Hotels are rooted in human connection.

Our Gorge location embodies what's important and best about the Northwest: An adventurous spirit combined with a comfortable and accessible environment. Connected to and honoring the past, but always savoring the present and dreaming of the future.

We look forward to sharing our vision with you, and helping you craft the experience you desire.



CELEBRATIONS

The original Bingen School gym is now the life of your next party. The flexible event space has room for groups up to 250 people, including built-in bleachers for additional seating. There is an adjustable curtain to divide the room in half for break-out or small sessions, as well as the adjacent Teacher's lounge for more intimate groups and meetings. The gym has a separate entrance, private restrooms, registration desk (or bar), a digital projector and sound system, gym equipment, and vintage and fun games to encourage team building and laughter.





COLLABORATIONS

Located within the Gymnasium, the Teacher's Lounge has a beautiful view of the Columbia River Gorge and is the perfect destination for your next offsite meeting. It has a rustic conference table with room for 14, a digital projector and sound system: ask about pricing to add our Meeting Owl for on-line conference calls. Also featuring a large whiteboard, and original school lockers for personal storage. We can prepare the space to suit your needs- from cocktail hour to business meeting- to make for an effortless event.





REJUVENATIONS

Unlike any other structure, our custom designed venue started as a vision of unity, gathering, healing and renewal. The vision is now a reality and available for your next retreat. The building's dome shape allows for unparalleled acoustics, making that group Om even more powerful.

Our beautiful spa and bathhouse is the perfect location for easing into blissful relaxation. Featuring an indoor saltwater soaking pool, an outdoor hot pool, a cold plunge, a sauna & massage facilities.





The Bingen School complex was designed by Pacific Northwest architect Donald J. Stewart and built in 1937 by the Civilian Conservation Corps, a public work relief program that operated from 1933 to 1942 for unemployed, unmarried men as part of the New Deal. The 7500-square-foot schoolhouse served as the school for Bingen and White Salmon, Washington, from 1938 until the 1970s. In 1988, it was converted into a hostel, which offered private rooms and dormitory style accommodations. Most recently, it operated as the Bingen School Inn for nearly 30 years.

Like the original Society Hotel, our team restored, renovated and revitalized the Bingen School, melding modern comfort with historical preservation. The historic schoolhouse has retained some original features during its conversion into the lobby, café, and guest rooms. The original multipurpose gym has also been restored and upgraded, keeping the original gym floor and bleachers intact.

Also similar to our Portland, Oregon location, the new property bridges the gap between hotel and hostel by offering both private rooms and bunkhouse accommodations in the main schoolhouse building, along with new stand-alone cabins. The three options for accommodation appeal to a variety of travelers who are drawn to the Gorge for its incredible diversity of activities in a stunning setting – from hiking, cycling and white water rafting and other water sports,

to wine, beer and cider tasting, to exploring the famous Hood River County Fruit Loop and nearby Mount Hood and Mount Adams. Warm and welcoming community spaces are also a signature of The Society Hotel, and the new property features numerous group gathering places. The lobby provides a bright and airy space with ample seating and a café/bar serving regional coffees, teas and pastries, as well as cocktails, beer and wine. The hallowed, original school gym has been restored and continues to serve as a multipurpose room for everything from shooting hoops to corporate meetings. The 20 private cabins encircle a community building with a soaking pool, sauna, hot tub, cold plunge, massage rooms, as well as a café. The team has also constructed a dome-shaped subterranean building, which is the ultimate private getaway for classes, retreats and workshops - The Sanctuary.

LODGING OPTIONS

Please note that wedding group booking for lodging is not available on the weekends during our Summer season (April 1st - September 30th).

Blocks are available with a 50% deposit and ensures your guests guaranteed lodging during your event.

Your deposit is released to you after guests have secured their personal reservation with their own credit card.

Full payment for rooms that are not secured by guests individual credit card is due 90 days prior to arrival.

**Rates will fluctuate based on time of year and number of rooms pre-reserved. Please contact your event concierge for specific rates and availability during your event.*





Schoolhouse Hotel Rooms

Private Queen or King rooms located in our historic schoolhouse building. Each room features its own sink and vanity with mirror. Like a European boarding house, four private restrooms with showers and complimentary shower amenities are located just across the hall and are reserved exclusively for Schoolhouse room guests.

- Queen or King luxury mattress with cozy in-bed reading lights and convenient power outlets
- Individual heating and cooling controls with continuous fresh outdoor air and MERV 13 filtration
- Soft, comfortable luxury linens and bathrobes.
- Locally inspired artisan décor with storage shelving and blackout curtains



Room Rates:
\$127-194/night per room

Capacity: 10 Rooms
(5 Queen & 5 King)
Max 2 guests/room



Mountain & River Bunks

A fun, comfortable, and economical way to stay. We offer two bunkrooms, each with 24 beds stacked 3 high. This stylish hostel option can be reserved "by the bed," or a full bunk room buyout.

- Luxury twin-size mattresses with privacy curtain, light, outlet, and small locker at the headboard.
- Bunk rooms share 6 private bathrooms with toilet, sink, and shower. Each individual bathroom is only accessible by keycard and can be locked from the inside to show a red light when in use.
- Bunk guests receive their own clean bed and bath linens. Bathrooms offer shower amenities.
- Community desk space and mini-kitchenette with refrigerators are available for bunk guests and are located directly outside of bunk rooms.
- Carry-on size luggage lockers are available just outside the bunkroom. We encourage guests to bring your own lock; additional locks may be available for purchase on site.
- Bunk rooms are co-ed, unless you purchase a 100% buy-out and can then designate your own guest placement. Lights are dimmed during "Quiet Hours" of 10 pm – 8 am.

Bunk Rates: \$35 - \$55*/night per bunk
Capacity: 48 Bunks (24 bunks/Room)



Private Cabins

Located just outside the main schoolhouse on the prior ball field you'll find our private cabin ring with firepit courtyard. Spread out and enjoy full privacy, your own kitchenette, and your own private restroom in our spacious and custom designed one and two bedroom cabins.

- Each includes a well-appointed kitchenette with small refrigerator, induction burner, toaster oven, electric tea kettle, French press, cookware, and dishes for up to four guests.
- Queen or King luxury mattress with cozy in-bed reading lights and convenient power outlets
- Locally inspired artisan décor with storage shelving and blackout curtains
- All cabins include access to an adjacent patio with hammock and picnic table
- Queen cabins include a full bathtub. King and ADA cabins feature a walk-in shower.
- Luxurious white bathrooms, full bed and bath linens provided





Cabin Rates:

\$210-\$400/night per cabin

Double Queen Cabin: 2 Bedrooms, each with Queen Bed & bathrobes (Sleeps 4 guests), 16 Double Queen Cabins

King Cabin: 1 Bedroom with King Bed & bathrobes (Sleeps 3 guests with Rollaway), 3 King Cabins

ADA Cabin: Open Floor plan with 1 Queen Bed plus 2 Twin Bed Bunks & bathrobes (Sleeps 4), 1 ADA Cabin

SPA & BATHHOUSE

All registered hotel guests have complimentary access to our beautiful spa and bathhouse featuring our saltwater hydrotherapy pools.

- Indoor warm pool & cold plunge pool • Outdoor hot pool • Cedar sauna •
- Spa locker rooms with showers, hair dryers, and swimsuit spinner • Spa café with healthy snacks & drinks •
- Swimsuits are available, as well as pampering supplies! •

[Facial services](#) available for groups, or individuals!







Celebrations & Gatherings Pricing

THE GYMNASIUM

Monday-Wednesday: \$175 an hour

Thursday-Sunday: \$250 an hour

*4 hour consecutive minimum

- 2,701 Square Feet (37 ft x 73 ft)
- Built-in bar and/or registration desk
- Water station included
- Private Restrooms
- Built in vintage wood bleacher seating
- Personalized music available via Sonos
- Vintage games

- Additional fee - AV Equipment: projector, HDMI connection, PA system, wired microphone, & podium, large chalkboard and large whiteboard, Apple TV, Meeting Owl.

- For elegant celebrations, we recommend renting tables, chairs, and other banquet equipment from Riverhood Rentals, and Kingsley Supply for additional design elements. The Society Hotel Bingen also has some tables & chairs that can be rented.



Capacity:

- Round Table Dining: 100
- Long Table Dining: 150
- Cocktail Tables: 200
- Dance Party: 250+
- Classroom Setup: 100





THE TEACHERS' LOUNGE: Meeting/Flex Space Room

A light-filled space with a view of the beautiful Columbia River Gorge.

The perfect flex space for your gathering or meeting.

4-Hour Block: \$300
 8-Hour Block: \$600
 12-Hour Block: \$900

- Rustic wooden conference table (13'3" by 3'3")
- Seating for 14 attendees
- Private Restrooms adjacent to the space
- Wall mounted magnetic whiteboard (8' x 4')
- Free Wi-Fi, Power, Sonos for Music, BenQ Projector, HDMI Connection, and screen.
- Apple TV with access to content
- Meeting Owl
- Max Capacity: 14

THE SANCTUARY

A subterranean retreat center and peaceful gathering place.

4-Hour Block: \$400
 8-Hour Block: \$800
 12-Hour Block: \$1200

- Round configuration – 708 Sq Feet, 30 ft Diameter
- Private restroom
- Utility sink area with counterspace for tea/coffee service
- Yoga Mats (20), Blocks (16), Blankets (15), & up to 40 Floor Chairs

Capacity:

- Yoga: 25
- Standing: 50

Outdoor Gathering Options

THE BREEZEWAY

A casual outdoor space with overhead string lighting. Conveniently located between the Gymnasium and Lobby, with close proximity to the Café & Bar

\$125 an hour

*2 hour minimum

- Personalized music via Sonos

Capacity:

- 6 Picnic Tables seat: 24
- Max Capacity: 30



THE SCHOOLHOUSE OUTDOOR COURTYARD:

Your guests will enjoy their own outdoor courtyard with propane fire pit and fun lawn games.

\$175 an hour

*4 hour minimum

- 4 Adirondack Chairs plus up to 6 outdoor stools.
- Personalized music via Sonos
- Water Station
- Max Occupancy: 50 guests
- Suitable for intimate gatherings and cocktail parties and is not intended for dining.

Capacity:

- Firepit Seating: 10
- Maximum Capacity: 50



THE CABIN RING COURTYARD:

Our largest outdoor dining and gathering space located within the cabin circle and adjacent to the Spa and Sanctuary.

\$250 an hour

*4 hour minimum

- Available exclusively until 8 pm for your guests, unless you have reserved the entire Cabin Ring for Lodging. When entire cabin ring is reserved, the venue is available until 10 pm.
- Two fueled firepits
- Water Station
- Personalized music available via Sonos
- Includes use of cabin ring tables and chairs.
- For table dining or cocktail tables we recommend renting tables, chairs, and other banquet equipment from Riverhood Rentals, and Kingsley Supply for additional design elements
- Available bar service via adjacent pool cafe serv. window

Capacity:

- Table Dining: 48
- Fireside Seating: 20
- Cocktail Party: 100

To rent the cabin ring courtyard after 8pm we require all cabins to be reserved within your group.



Food & Beverage Catering

The Society Hotel offers open catering so you can fully customize your dining experience. We've provided a list of recommended caterers who are familiar with our property and can offer you flexible dining options for you and your guests.

We offer both cafe and licensed beverage options. Our café can provide teas, coffees, and the tastiest sodas and juices for your group. For state licensing purposes, all alcoholic beverage options must be provided by The Society Hotel.

For gatherings of 20 or less, please inquire about our curated offerings. For more extensive food options, we encourage you to reach out to our local professional catering community :

Confections and Cakes Columbia Gorge Confections • East Fork Baking Company • Mint and Mischief

Event Supplies Riverhood Rentals • Kingsley Event Supply • Details Department

[The Wagon Social Club \(Mosier\)](#) sips and snacks from an adorable vintage mobile food truck.

[Feast Market \(White Salmon\)](#) great for lunch catering, deli platters, & meat and cheese platters.

[Celilo Restaurant \(Hood River\)](#) focused on locally sourced classic, American fare.

[Native Provisions \(Hood River\)](#) creates stunning grazing platters for groups large and small.

[Boda's Kitchen \(Hood River\)](#) inspired by the Pacific Northwest and able to prepare everything from a simple cheese platter for pickup to a full-service plated dinner.

[Four and Twenty Blackbirds \(Hood River\)](#) inspired by the Columbia Gorge and considerate of dietary needs, they offer gourmet catering for every type of event.

[Cafe Olli \(Portland\)](#) wood fired pizzas and other dishes inspired by locally sourced and seasonal ingredients.

[Ash Wood-Fired Pizza \(Portland\)](#) pizzas inspired by Neapolitan and classic New York style but with a Pacific Northwest sourdough pizza crust and locally sourced ingredients.



DRINK PACKAGES

The following pertains to all drink packages:

- Full Bar Package service is limited to groups of 50+.
- Events with more than 100 guests will require an additional bar.*

*subject to event location

- \$100 set up fee per bar
- Bartenders rate \$50 per hour.
- Service staff available at an hourly rate of \$50 per server.
- Guests under 21 will be charged \$10.00 per person rather than the standard fee.
- 20% gratuity will be applied to all beverage packages.
- All pricing listed is pre-tax; state and local taxes will be applied to all charges.
- Prices are subject to change

FULL BAR PACKAGE

Kettle One Vodka, Tanqueray Gin, Bacardi Silver, Kraken Spiced Rum, Cazadores Tequila, Makers Mark Bourbon, Johnnie Walker Black, Juices: lemon, lime, orange, pineapple, cranberry, Soft drinks: coke, sprite, ginger ale, soda water, tonic water, House Red Wine, House White Wine, House Rose Wine, House Sparkling Wine, Assorted Local Beers

4-hour open bar: \$44.00 per person

3-hour open bar: \$37.00 per person

* Add a celebratory toast \$5 in addition per person to selected package

ADD-ON TO BAR PACKAGES: LARGE FORMAT COCKTAILS

\$160 per gallon (2-gallon minimum) *estimated 20 servings per gallon

Choose from the following selections:

- Sangria
- Margarita
- Paloma
- Aperol Spritz



Upgrades:

*Bottled Sodas upgrade to House Beverage Packages included:

Mexican Coca Cola, Sprite, Topo Chico, Cock n Bull Ginger Beer

\$2.00 addition per person to selected package



BEER & WINE BAR PACKAGE

- Regional Winery Offerings of Red, White, Sparkling and Seasonal Rosé
(current selections vary based on availability)
- Local Brewery Offerings
- Assortment of bottled sodas & sparkling waters

4-hour open bar: \$37.00 per person

3-hour open bar: \$31.00 per person

* Add a celebratory toast: \$5 in addition per person to selected package

Upgrades:

*Bottled Sodas upgrade to House Beverage Packages included:

Mexican Coca Cola, Sprite, Topo Chico, Cock n Bull Ginger Beer

\$2.00 addition per person to selected package



COFFEE & TEA SERVICE

- Ceramic mugs available for up to 25 guests.
- Disposable coffee cups supplied to groups of over 25 guests.

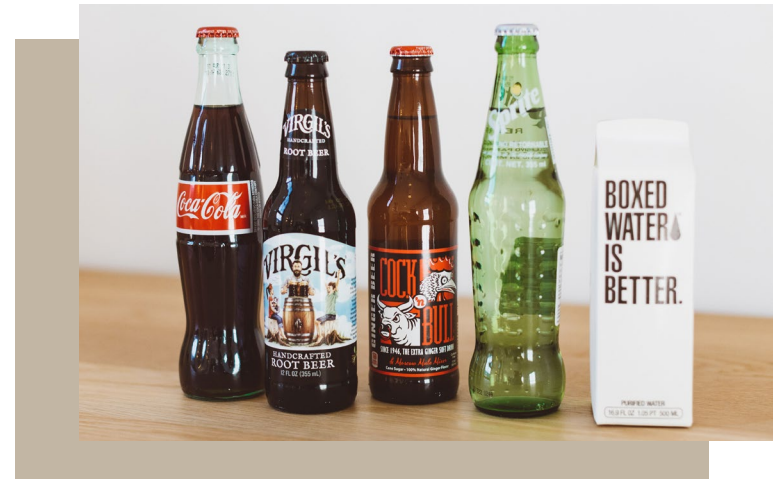
20% Gratuity will be applied to all beverage service

Caffe Vita Coffee Roasting Company & Jasmine Pearl Tea (3-liter min.)

Includes sugar, splenda & creamer

\$40 per 3-liter

*(12x) 8-oz servings per 3-liters



NON-ALCOHOLIC BEVERAGE OFFERINGS

20% Gratuity will be applied to all beverage service

Classic House-made Lemonade (2-gallon minimum) | \$25 per gallon

Iced Tea (2-gallon min.) - includes sliced lemons, simple syrup, splenda | \$20 per gallon

Bottled Sodas: Mexican Coca Cola, Sprite, Topo Chico Mineral Water, Cock n Bull Ginger Beer | \$3.50/each

Canned Sodas: Coke, diet coke, sprite, ginger ale, seltzer water, assorted La Croix | \$2/each

NON-ALCOHOLIC "BAR" PACKAGE

3-hour minimum

Assorted bottled sodas, sparkling waters, juices (orange, grapefruit, cranberry)

5-hour open bar: \$18.00 per person

4-hour open bar: \$15.00 per person

3-hour open bar: \$ 12.00 per person



Our Favorite Wedding Planners

Your magical day is in good hands with these local vendors!



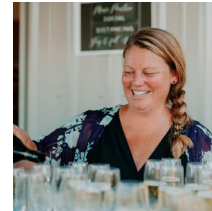
Kamea Events

From wedding day management to full service planning - we offer a wide variety of packages to fit your budget. Whether you're local to Portland (like us!) and have dreamed of having your wedding in our beloved Pacific Northwest, or maybe you're venturing somewhere else on our globe, we'd love to meet you there. | kameaevents.com



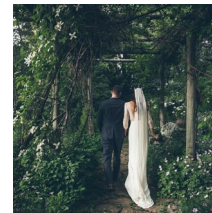
Union Event Co.

Whether you're seeking an experienced team you can trust to take the reins and plan every last element of your event to perfection—or are in need of wedding-day management to ensure you can remain present and ready to revel as the day approaches—our driving priority is to pave a seamless path to the party of your dreams. | unioneventco.com



Love Notes

I've been helping couples get married in the Columbia River Gorge for over a decade. I grew up here and am so lucky to call Hood River my home. If you are looking for someone local with lots of hands on experience to help you plan and coordinate your big day, please contact me so we can get to know each other better. | weddinglovenotes.com



Hitched in the Hood

Wedding & Event Planning & Design Team, based in beautiful Hood River, OR, serving the Columbia River Gorge. hitchedinthhood.com

Additional Resources

Transportation:

- [Shanghai Portland Party Bus](#)
- [Explore the Gorge Shuttle](#)
- [Gorge Taxi](#)
- [Martins Gorge Tours](#)
- [Hood River Pedicab, EV and Taxi](#)

Transportation:

- [West Side Services](#)
Lighting up events throughout the Gorge
- [Riverside AV](#)
Professional audio and visual production.
- [Party Cat](#)
Professional Photo Booth

Team-Building

- Arts and Crafts:** [Wildcraft](#)
- Pottery:** [Clay Commons](#)
- Dance:** [NK Studios](#)

Adventures:

- [MountNbarrel](#)
Elevated adventures
- [Zollers Outdoor Adventures](#)
Rafting
- [ColumbiaGorgeSailing](#)
Sailing

The Society Hotel, LLC (TSH) encourages our guests to include local businesses as part of your event, however none of these vendors listed is affiliated with TSH, and thus TSH assumes no responsibility or liability in connection with your choice to hire or work with any of the vendors listed.



Our event team is here to help customize the perfect event for you and your guests:

bingenevents@thesocietyhotel.com
+1 (509) 774-4437



the *Society*
HOTEL
BINGEN, WASHINGTON